



Site Address: Sector 109, Dwarka Expressway, Gurgaon

Disclaimer: License No. for Group Housing: License No 13 of 2011 dated 04/02/2011 under section 3 of the Haryana Development and Regulation of Urban Areas Act, 1975 and the Haryana Development and Regulation of Urban Areas Rules, 1976 framed thereunder for the development of a group housing colony. The building plans are approved vide memo no ZP-694/JD/BS/2011/18783 of 2011 dated 15/12/2011. No. of Units 444, excluding EWS (79). Provision for nursery school, convenience shopping and health club. Group Housing colony measuring 12.21225 acres of Land Developers reserve the right to make changes as per prevailing norms. The printed specifications mentioned are indicative, subject to change and may vary from the actual development. All images are artistic conceptualization and are not a legal offering and do not purport to replicate the exact product. The developer reserves the right to amend/alter the area, layout plans, elevations, specifications and amenities. For detailed information, kindly refer to application form. # 1 sq.mtr = 10.76 sq.ft. All the approvals are available at the corporate office of the Developer for inspection. Approximate distances are mentioned.

Disclaimer: The plan shown is for demonstrative purpose only and is subject to change.

ATS
KOOON

JOINTLY DEVELOPED WITH CHINTELS

Sector 109 | Gurgaon







PENTHOUSE LAYOUTS

SALEABLE AREA: 4450 SQ.FT. + 1875 SQ.FT. TERRACE

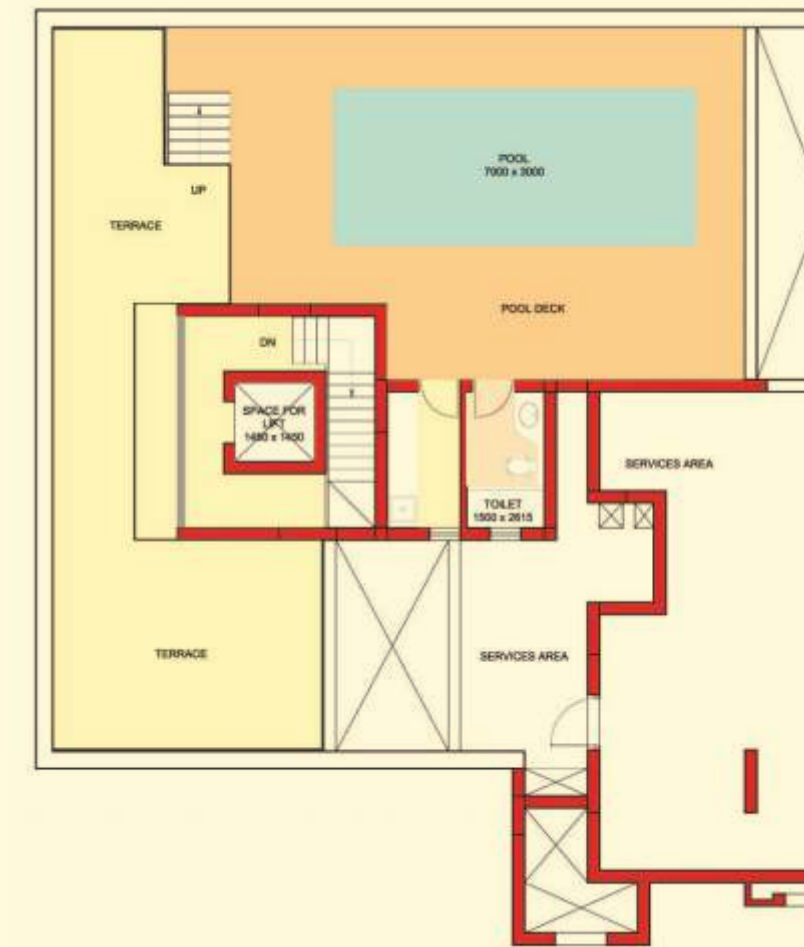


LOWER PENTHOUSE PLAN



UPPER PENTHOUSE PLAN

Note : Saleable area is tentative and is subject to change due to modifications asked for by approving authorities from time to time till occupancy certificate is obtained. Architect reserves the right to add/delete any details/specification/elevation mentioned if so warranted by circumstances.



PENTHOUSE POOL DECK



Note : Saleable area is tentative and is subject to change due to modifications asked for by approving authorities from time to time till occupancy certificate is obtained. Architect reserves the right to add/delete any details/specification/elevation mentioned if so warranted by circumstances.

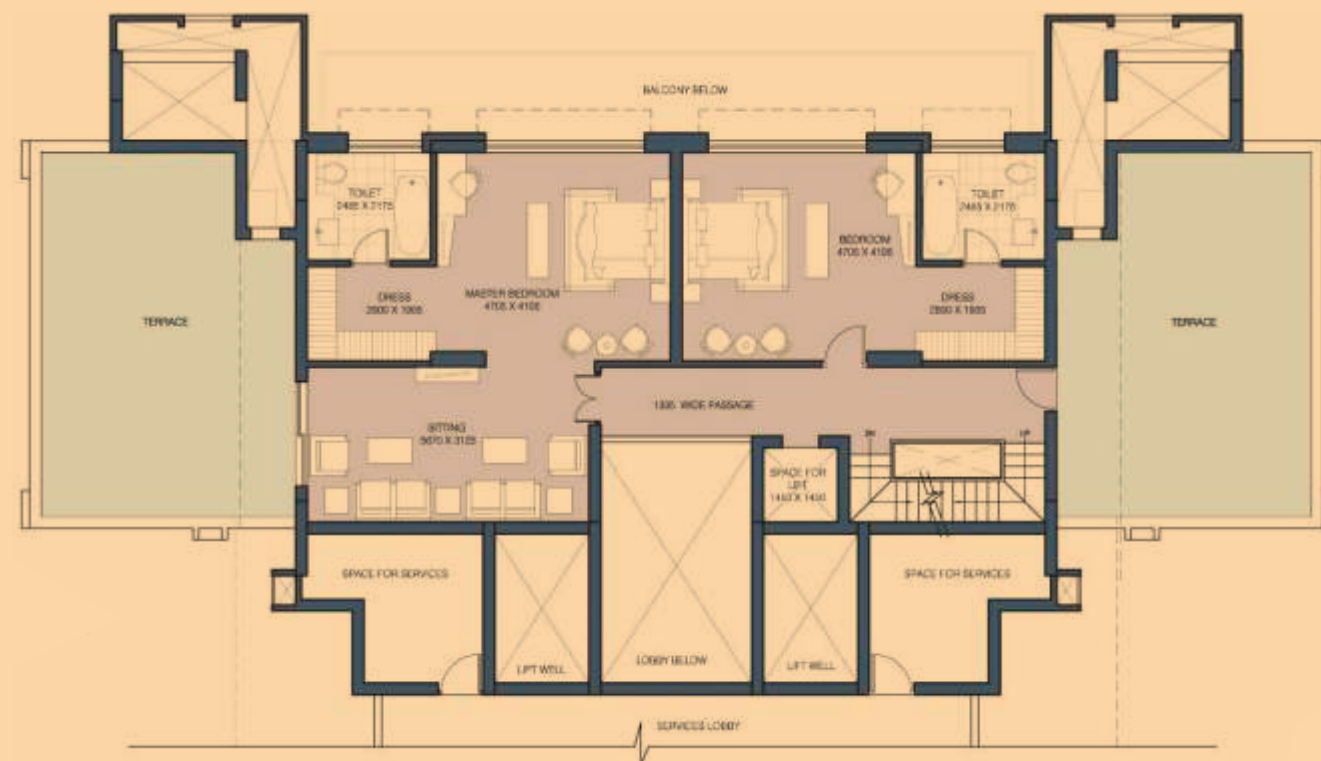


B PENTHOUSE LAYOUTS

SALEABLE AREA: 4725 SQ.FT. + 2650 SQ.FT. TERRACE

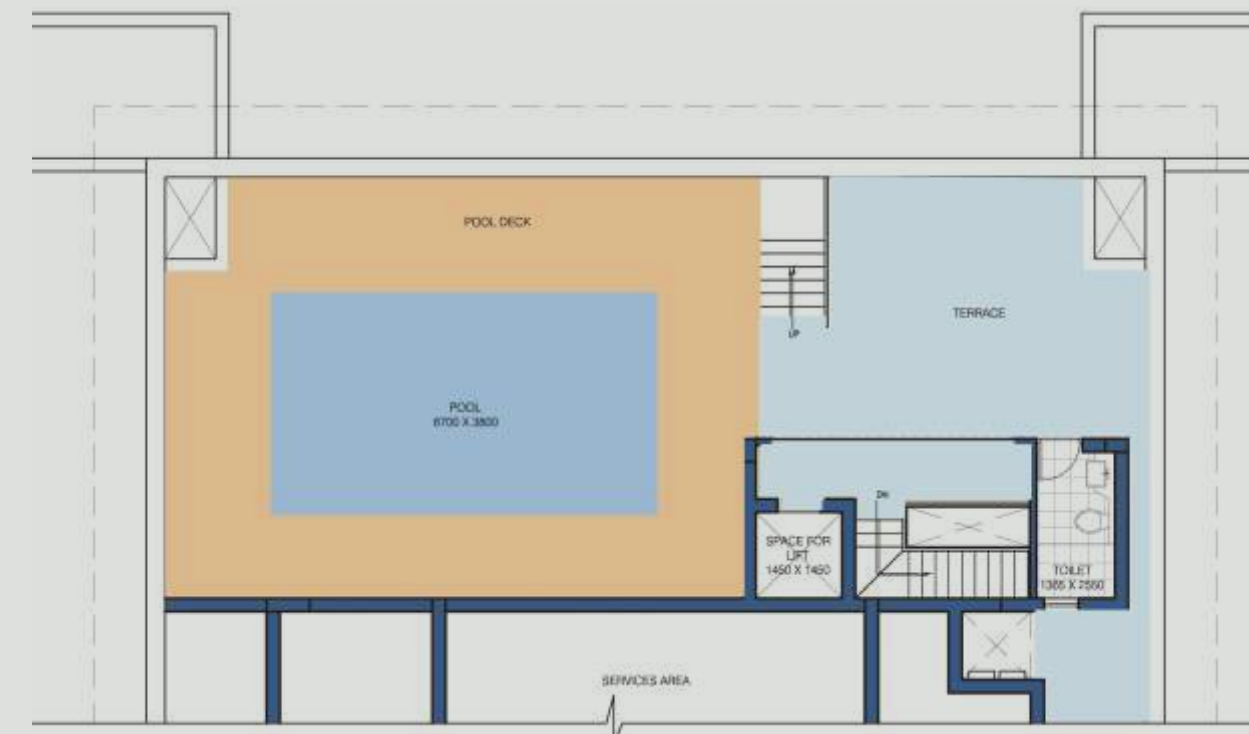


LOWER PENTHOUSE PLAN



UPPER PENTHOUSE PLAN

Note : Saleable area is tentative and is subject to change due to modifications asked for by approving authorities from time to time till occupancy certificate is obtained. Architect reserves the right to add/delete any details/specification/elevation mentioned if so warranted by circumstances.



PENTHOUSE POOL DECK



Note : Saleable area is tentative and is subject to change due to modifications asked for by approving authorities from time to time till occupancy certificate is obtained. Architect reserves the right to add/delete any details/specification/elevation mentioned if so warranted by circumstances.

C PENTHOUSE LAYOUTS

SALEABLE AREA: 4650 SQ.FT. + 2325 SQ.FT. TERRACE

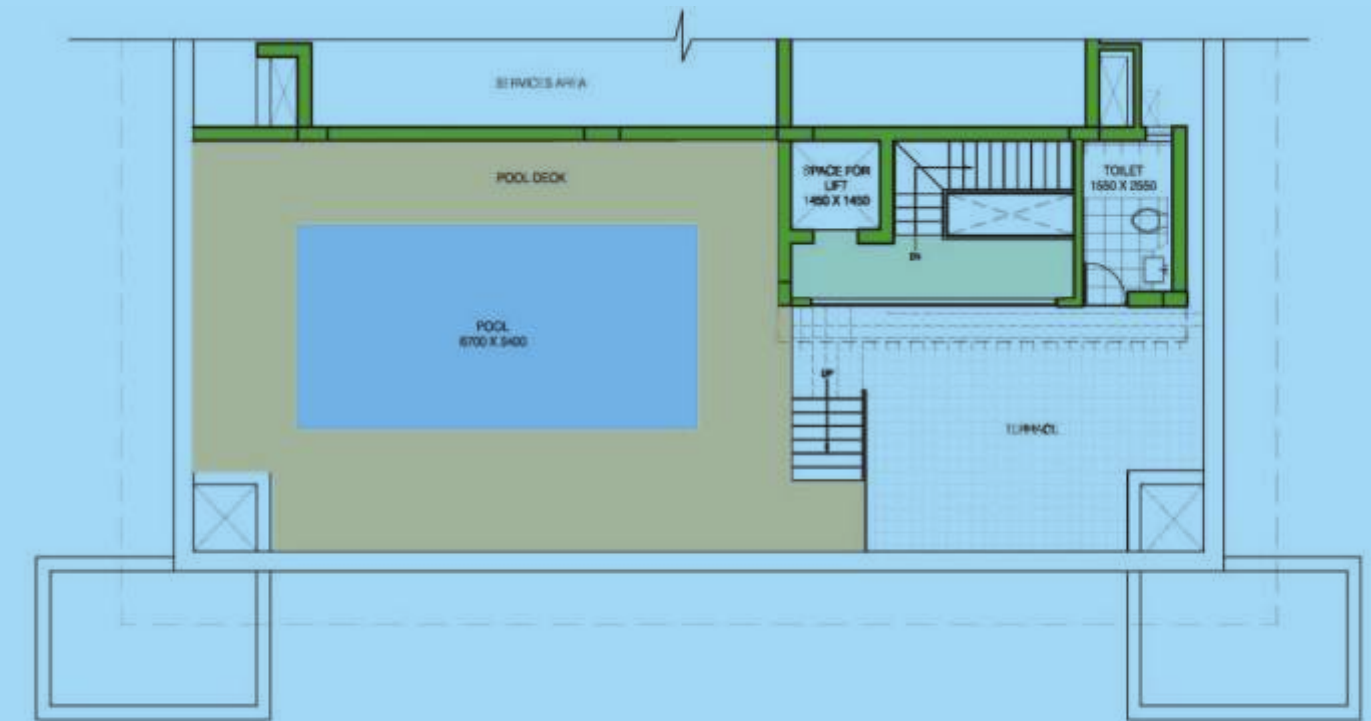


LOWER PENTHOUSE PLAN



UPPER PENTHOUSE PLAN

Note : Saleable area is tentative and is subject to change due to modifications asked for by approving authorities from time to time till occupancy certificate is obtained. Architect reserves the right to add/delete any details/specification/elevation mentioned if so warranted by circumstances.



POOL DECK PLAN

PENTHOUSE POOL DECK



Note : Saleable area is tentative and is subject to change due to modifications asked for by approving authorities from time to time till occupancy certificate is obtained. Architect reserves the right to add/delete any details/specification/elevation mentioned if so warranted by circumstances.